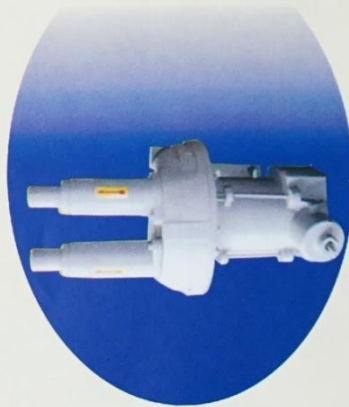


Turbine Blowers / Exhausters, Regenerative Blowers, Side Channel Blowers, Vortex Blowers, Ring Blowers



FAD 200/2
Double Stage Blower
Where High Vacuum or
Pressure is Required



Flame Proof Motor
Blower Single Phase.



SCB 7.5
Single Stage Blower
Where High Volume of Air is Required



FAD 200/4
Four Stage Blower
High Vacuum or Pressure But Low Volume
of Air And Not For Continuous Run.



FAD 100/1-A
When Vacuum And Pressure
Requires At Same Operation

<https://aerotech.co.in>

Specification			
Model	HP	Capacity M3/HR	Max. Press MBAR
FAD 50/1	0.5	80	80
FAD 50/2	0.5	40	125
FAD 100/1	1.0	200	135
FAD 100/2	1.0	100	205
FAD 100/1-A	1.5	100/100	95/95
FAD 200/1	3.0	400	195
FAD 200/2	3.0	200	300
SCB 3	3.0	300	240
FAD 250/1-A	5.0	600	225
FAD 250/2-A	5.0	300	340
FAD 200/4	5.0	200	540
FAD 250/1	7.5	600	245
FAD 250/2	7.5	300	385
SCB 7.5	7.5	900	290
FAD 600/1	12.5	1200	280
FAD 600/2	12.5	670	490
FAD 800/1	20.0	1500	280
FAD 800/2	20.0	800	480

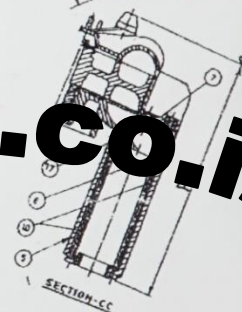
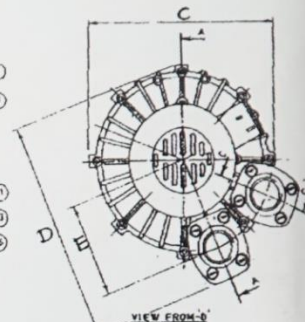
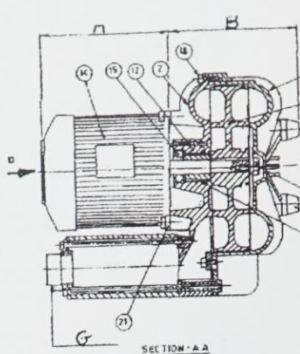
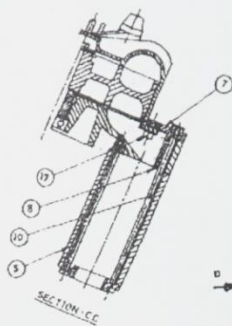
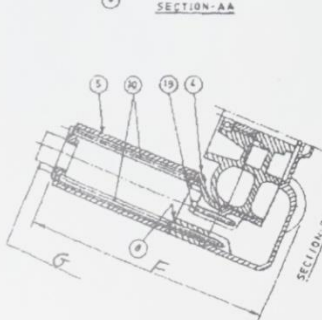
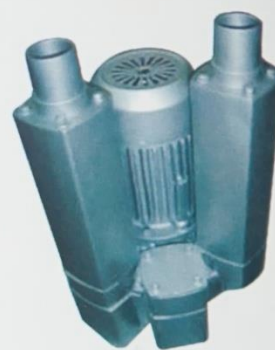
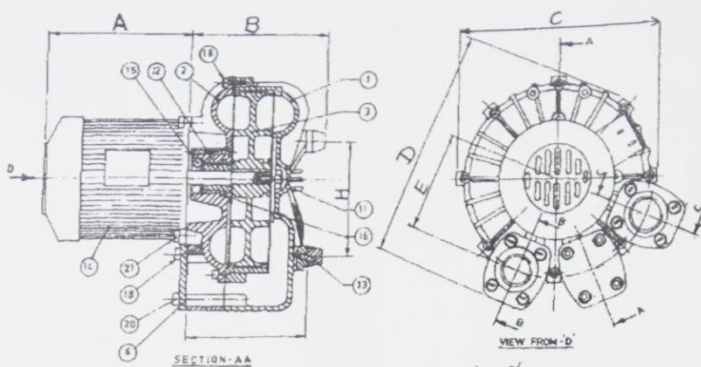
Important Features

- Additional Filter System (optional)
- Two Face Impeller For High Air Flow
- No Metal To Metal Contact, No Lubrication
- Oil Free Compressed Air
- Non Pulsating Continuous Air Flow
- Rugged Construction
- Practically Zero Maintenance
- Low Noise Operation
- Compact Size And Light Weight

Specification				
Model	HP	Capacity M3/HR	Max. Vacu MBAR	
FAD 50/1	0.5	80	75	
FAD 50/2	0.5	40	115	
FAD 100/1	1.0	200	120	
FAD 100/2	1.0	100	190	
FAD 100/1-A	1.5	100/100	85/85	
FAD 200/1	3.0	400	180	
FAD 200/2	3.0	200	280	
SCB 3	3.0	300	230	
FAD 250/1-A	5.0	600	210	
FAD 250/2-A	5.0	300	325	
FAD 200/4	5.0	200	400	
FAD 250/1	7.5	600	240	
FAD 250/2	7.5	300	365	
SCB 7.5	7.5	900	270	
FAD 600/1	12.5	1200	250	
FAD 600/2	12.5	670	360	
FAD 800/1	20.0	1500	250	
FAD 800/2	20.0	800	340	

Note : Since Improvements are made from time to time specifications may vary within 10%

G. A. DRAWINGS

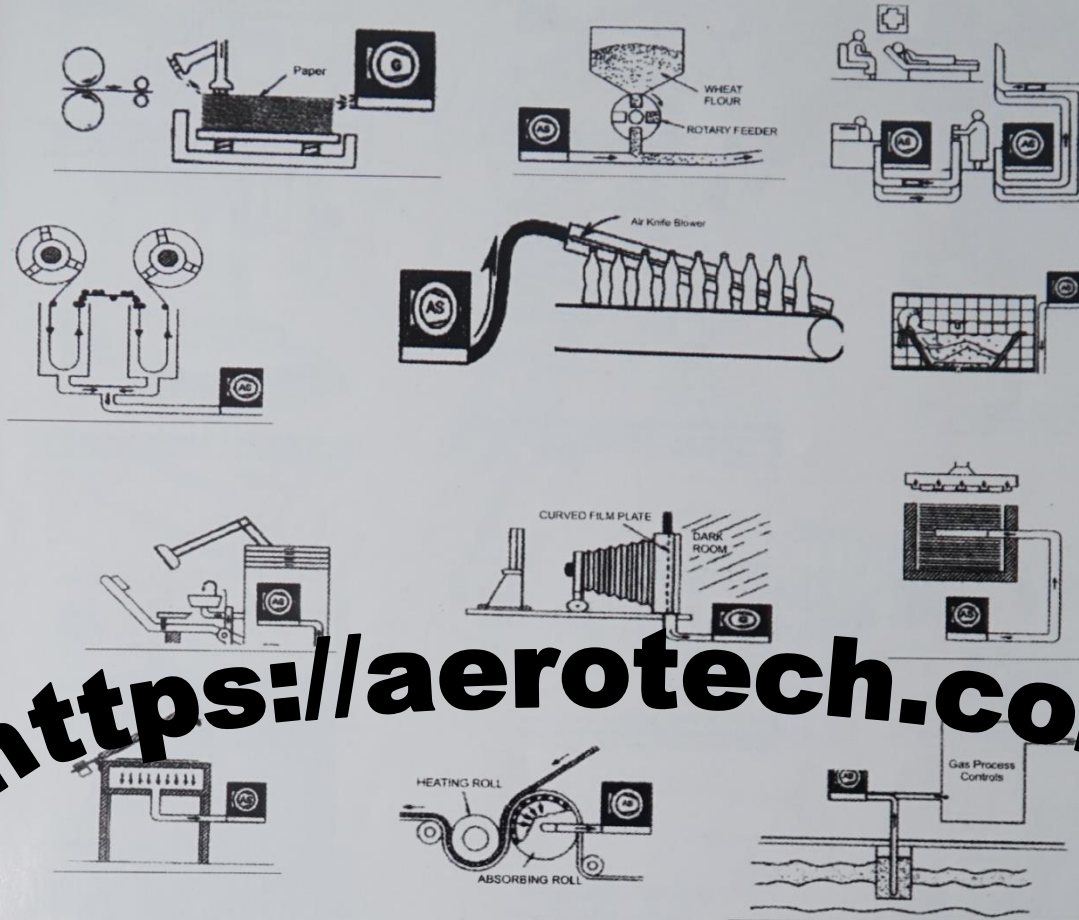


<https://aerotech.co.in>

P. No.	DESCRIPTION
1	END COVER
2	MOTOR END COVER
3	IMPELLER
4	SILENCER DISTANCE PIECE
5	SILENCER
6	TOP COVER
7	BOTTOM COVER
8	SILENCER FITTING GASKET
9	WIREMESH (SILENCER)
10	IMPELLER FITTING GUID
11	IMPELLER LOCK STUD WASHER
12	DISTANCE RING
13	RUBBER FOOT
14	ELECTRIC MOTOR 3 ϕ
15	BALL BEARING
16	SQ. SEC. NYLON RING
17	HEX, SOCKET HD. CAP SCREW
18	HEX, SOCKET HD. CAP SCREW
19	HEX, SOCKET HD. CAP SCREW
20	HEX, SOCKET HD. CAP SCREW
21	HEX, SOCKET HD. CAP SCREW

	FAD 50/1	FAD 100/1	FAD 100/2	FAD 200/1	FAD 200/2	FAD 250/1	FAD 250/2	FAD 600/1	FAD 600/2	FAD 800/1	FAD 800/2
A	239	270	270	275	275	345	345	425	425	530	530
B	120	155	155	185	185	205	205	290	290	330	330
C	236	285	285	348	348	410	410	515	515	560	560
D	269	343	343	396	396	468	468	570	570	630	630
E	115	150	150	174	174	200	200	245	245	265	265
F	270	425	425	530	530	615	615	730	730	-	-
G	34 ϕ	49 ϕ	49 ϕ	60 ϕ	60 ϕ	76 ϕ	76 ϕ	114 ϕ	114 ϕ	150 ϕ	150 ϕ
H	175 ϕ	210 ϕ	210 ϕ	260 ϕ	260 ϕ	312 ϕ	312 ϕ	320 ϕ	320 ϕ	399 ϕ	399 ϕ

SOME OTHER APPLICATIONS



<https://aerotech.co.in>

We Specialize In Manufacturing Of Turbine Blowers, Exhausters, Regenerative Blowers, Side Channel Blowers And Vortex Blowers. Our Products Are Widely Approved And Accepted For Applications In Industries. Such As Pneumatic Conveyors, Industrial Vacuum Cleaner, Dust Collecting Systems, Confectionery Machines, Cable Making Machinery, Printing Machinery, Pharmaceuticals Machinery, Plastics Machinery, Packaging Machinery, Electroplating & P.c.b. Mfg. Drying Process.

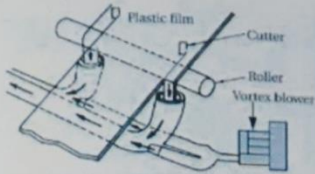
Our Company Philosophy Is Based On "Providing Solutions Which Are Reliable And Consistent At Most Economical Cost."

AEROTECHTM
engineering co.

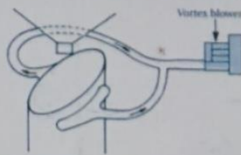
39, Tirupati Industrial Estate, Saraspur, Ahmedabad-380024 (Gujarat) India
 Telefax : +91-79-22779832 (Mob.) +919825494926

Website : <http://www.aerotech.co.in> • E-mail : aerotech_guj@yahoo.co.in • info@aerotech.co.in

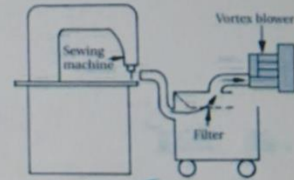
APPLICATIONS



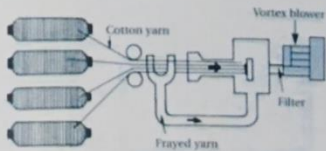
Film scrap collection. Scrap from plastic and paper slitting operations is collected by a pressure or vacuum evacuation system.



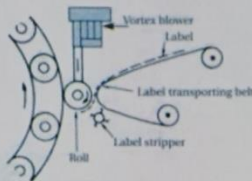
Bag filling equipment. Vacuum from a Vortex blower is used to hold bags open during filling operation for flour and other dry materials.



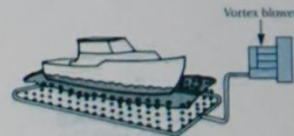
Industrial sewing machine. High-speed industrial sewing machines create large volumes of lint and waste yarn, which is scavenged by a Vortex vacuum system.



Automatic loom. Cotton yarn is held in a vacuum stream before being supplied to the loom. The vacuum system also removes cotton scraps and frayed yarn.



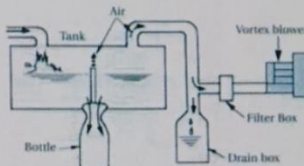
Automatic labeling machine. As a label stripper frees labels from their backing paper, they are held by suction on a roller for transfer to labeling equipment.



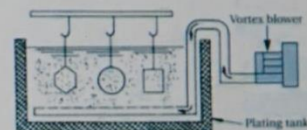
Ice prevention system. Air bubbles streaming from a diffuser ring keep water circulating to prevent icing.



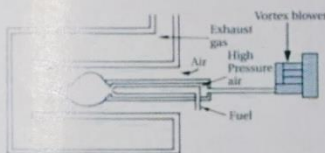
Septic tank. Vortex blowers are used in relatively shallow tanks to agitate effluent, promote bacterial action and separate sediment.



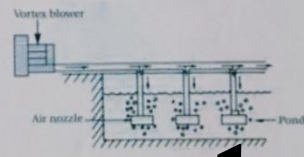
Automatic bottling machine. A Vortex blower facilitates high-speed bottling by removing air from the bottles during the filling operation.



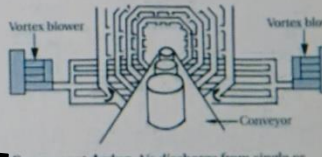
Plating tank agitation. High-pressure air circulating the electrolytic solution in a plating bath to promote uniform, rapid plating.



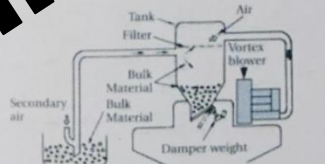
Gas burner. A steady flow of high-pressure air from a Vortex blower aids efficient combustion in gas burners.



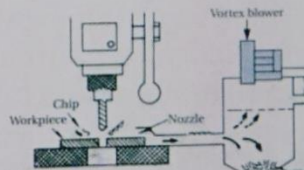
Fish and shell processing. High-pressure air from a Vortex blower is used to clean and dry fish and shell products.



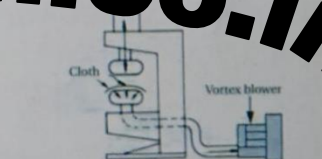
Component drying. Air discharge from single or multiple blowers powers a small drying system for components or products.



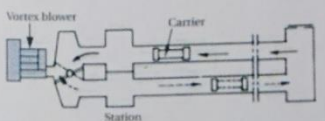
Bulk material handling. Air transport systems use Vortex blowers to convey dry materials such as pellets, granules and chips with either vacuum or pressure.



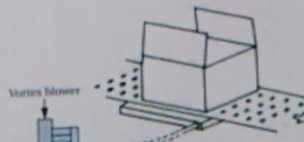
Chip removal. Chips generated during operations are automatically evacuated by a Vortex vacuum system.



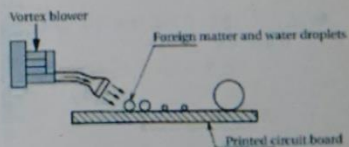
Commercial ironing machine. In this ironing machine, clothing is ironed on a padded surface with the aid of steam. The Vortex blower sucks the steam through the padded surface for evacuation.



Pneumatic conveyor. Vortex vacuum systems convey checks, cash and documents in banks, hospitals, offices, etc. With its reversible operation, the Vortex blower eliminates the need for a diverter valve.



Corrugated box packer. A vacuum applied through a suction plate holds boxes in stable position for filling.



Air knife. High-pressure air jets remove foreign matter and liquid droplets from parts before further processing.

<https://aerotech.co.in>